

# Food Fortification Against Malnutrition

## Preventing Malnutrition through Food Fortification Initiatives in West and Central Africa

May 2026



**Soukeyna L. G. MBODJ**

WACARO – West And Central African Region  
Food Quality / Fortification / local Food solutions  
Nutrition

# CONTENTS

**01**

Context WACARO

**02**

Barriers / Solutions

**03**

Examples of initiatives in WACARO

**04**

WFP value proposition



# Context WACARO

# FNG results: Affordability of a nutritious diet remains a key challenge

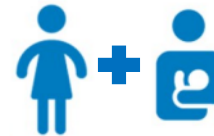
## In the WCA countries\*, Nutritious Diet costs twice more than Energy only Diet



**21%**  
of households can not access an **Energy diet**



**58%**  
of households can not access to a **Nutritious diet**

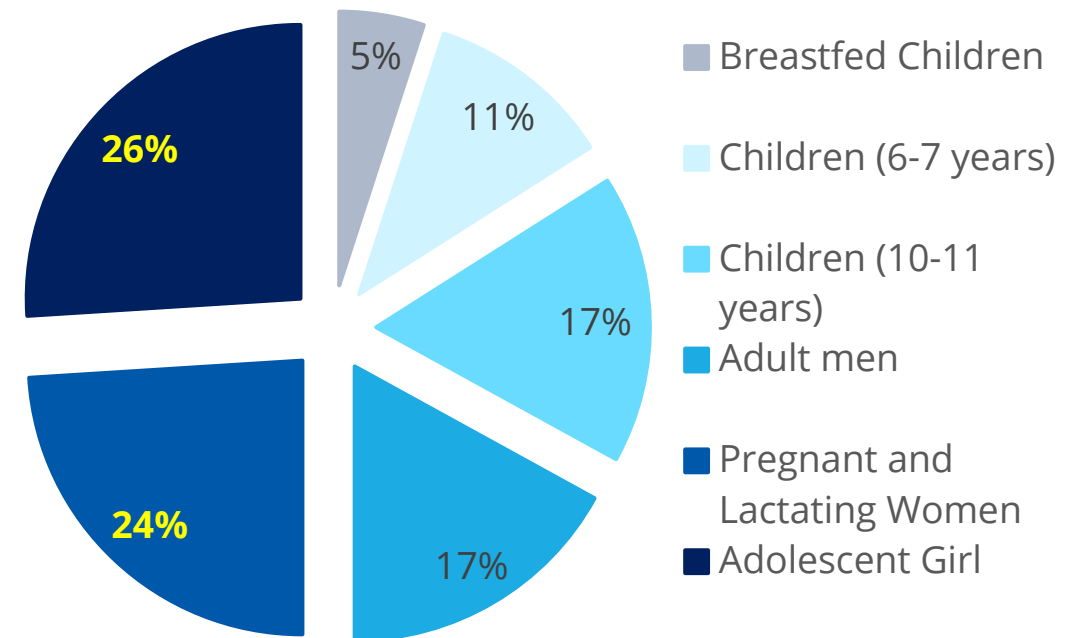


In the SAHEL countries\*, **Adolescent girl and Pregnant/Lactating Woman** count for **50% of the cost of nutritious diet** in a household.



### Factors impacting the non-affordability of a Nutritious Diet

- ✓ Livelihoods
- ✓ Seasonality (Lean season)
- ✓ Insecurity & population displacement



\* Data only available for Burkina Faso, Ghana, Guinea Bissau, Mali, Mauritania, and Niger

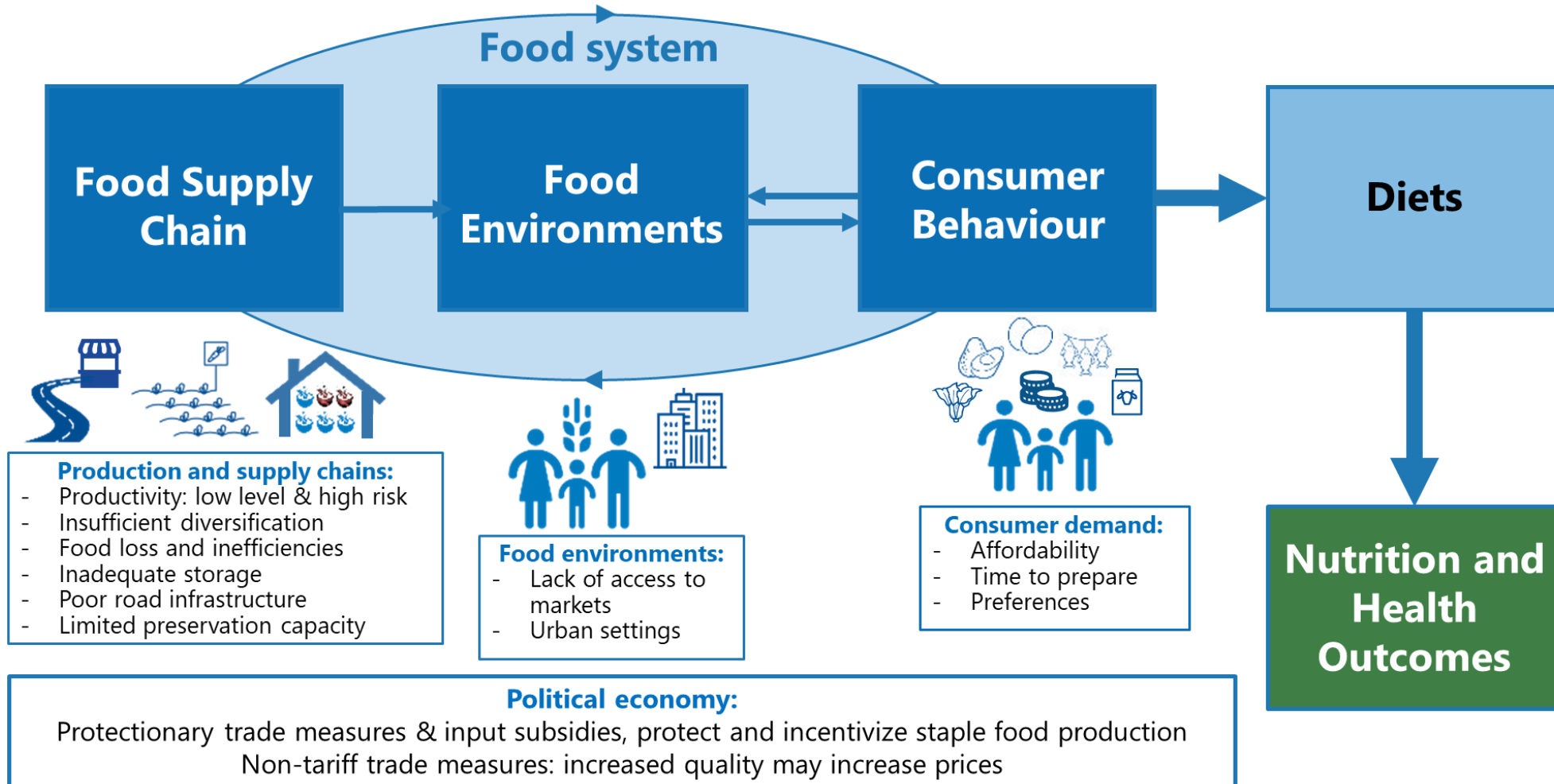
\* Burkina Faso, Mali, Mauritania, and Niger



## Barriers / Solutions

# Food system & Dietary Intake / Healthy diets

**only 1 out of 8 children and 1 out of 4 of women eat a well-balanced nutritious diet**



# How to increase affordability of a nutritious diet ?

**In the WCA countries\*, Nutritious Diet costs twice more than Energy only Diet**




Improve access to **complementary foods, specialised nutritious foods** and **supplementation** for target groups



**Nutrition-sensitive** school feeding



Improve access to **locally available nutritious foods**



(Staple) food **fortification**



**A intervention package** for the household to ensure optimal nutritional coverage for all individuals



Interventions to **increase household income** or social protection **cash transfers**

# 03

## Examples of initiatives in WACARO

# ENVAC

## Enhanced Nutrition and Value Chains in Ghana

### Enhanced Nutrition and Value Chains (ENVAC) Objectives

- Increase local production, improve quality & market integration of nutritious staple foods
- Enhance local processing capacity for special fortified nutritious foods and fortified blended flours;
- **Improve adoption and utilisation of good nutrition practices;**
- Improve food safety, quality & standards, monitoring and evaluation, and gender integration, climate smart etc across all project activities.



Food Supply chain

Food Environment

Demand - Consumer Behavior



- **10 000 Farmers** supported with equipments, and market linkages
- **3 Industrial processors** involved with WFP among them Premium Foods, Yedent Group,
- **Partnership between Ghana FDA and WFP**– to ensure compliance to food safety and quality (Processors-Retailers)

# FOPAT

## Fortification of commonly consumed processed food products in Niger



Objective: FOPAT aims to strengthen local production and the consumption of quality fortified foods that are accessible to all, both geographically and economically.

1. **Support development of semi-industrial production units**
2. **Support to commercialisation and marketing**
3. **Pilots in school feeding programs** for special fortified nutritious foods and fortified blended flours
4. **Improve development of norms and standards**

- Better quality of harvested products and reduction of post-harvest losses
- **10 cooperatives** for millet and cowpea (part of local purchasing programme under the PRRO), and which are also involved in the processing/selling of flours, biscuits and oils;
- Sahara Sahel Food (SSF) has been supported
- Niger health authorities as a supervisory body.



# AFOR- PROFORT

Support of women producing complementary foods for children aged 6 to 23 months - Chad



- **331 Farmers organisations** enrolled and trained: seed provision, training on post harvest losses, storage improvement and production contracts
- **4 semi-industrial complementary food production semi-industrial units** were implemented in 2019. Capacity Strengthening for processing and marketing. Women producers and other association - involved in the artisanal production of fortified complementary foods have a sustainable model

Food Supply chain

Food Environment

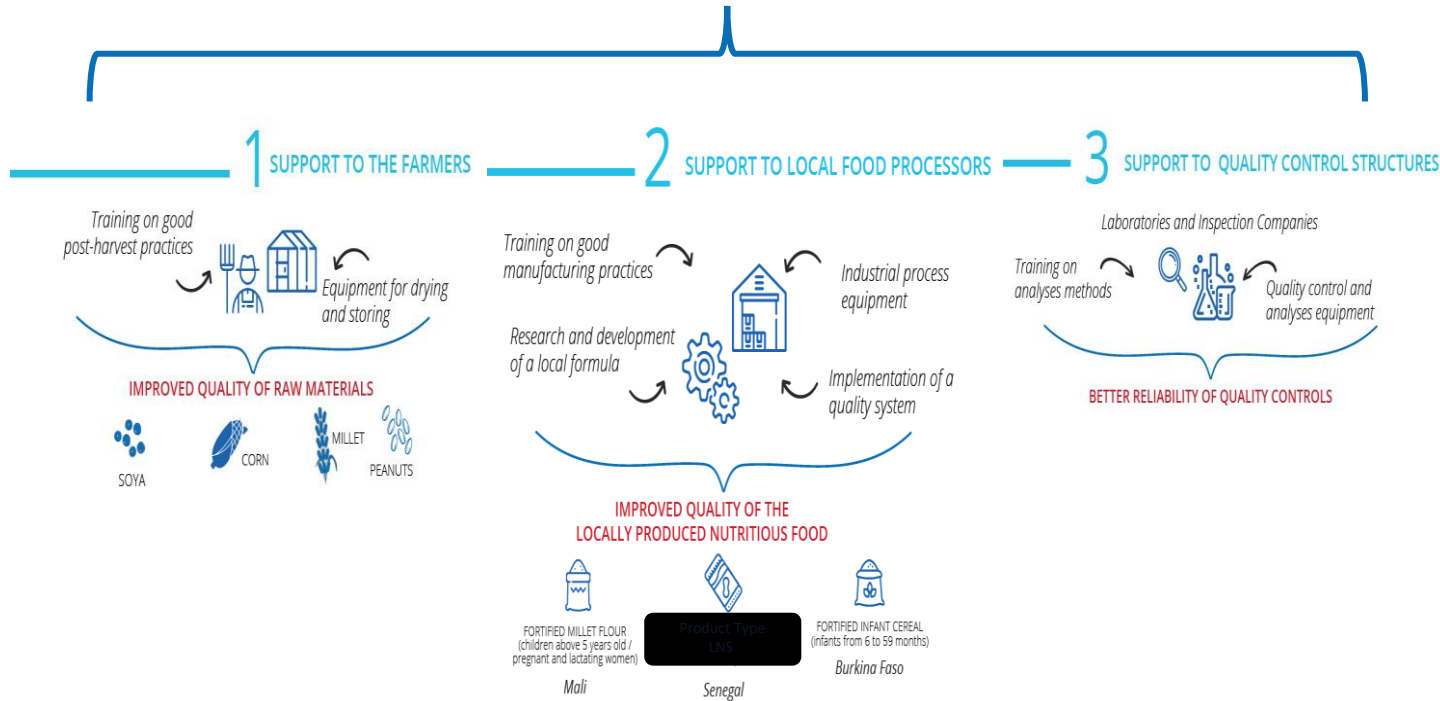
Demand – Consumer Behavior



# ALTAAQ, Achats Locaux, Transformation Alimentaire, Amélioration de la Qualité – Burkina Faso, Mali & Senegal



## Integrated quality approach



**Positive Outcomes:** value chain approach, Formulas with local raw materials, stronger understanding of industrial sector -linkage with private sector, Improvement of companies' management capacities, Upgrading of **quality structure** (system and products)

**Objective 2**  
Capacity Strengthening of local production and processing

- ✓ **3 business partners with HACCP implemented and processing equipments upgraded**
- ✓ SODEPAL- Burkina Faso
- ✓ Céréales de TATAM – Mali
- ✓ SENICO – Senegal

**Key results:**

- **Production Lines in Burkina Faso and Mali fully operational since January 2020**
- Improvement of the processing line
- **Market access**, and in progress of integration to WFP Burkina Faso programme

# RICE FORTIFICATION

scaling up Rice Fortification pathway & Integration with school feeding programs



## Getting started

- Commitment
- Establish feasibility & acceptability
- Technical cooperation
- Coordination & partnerships

## Build capacity

- Harnessing social safety nets
- Testing Pilots
- Building the supply chain
- Controlling costs
- Ensuring quality

## Scale up

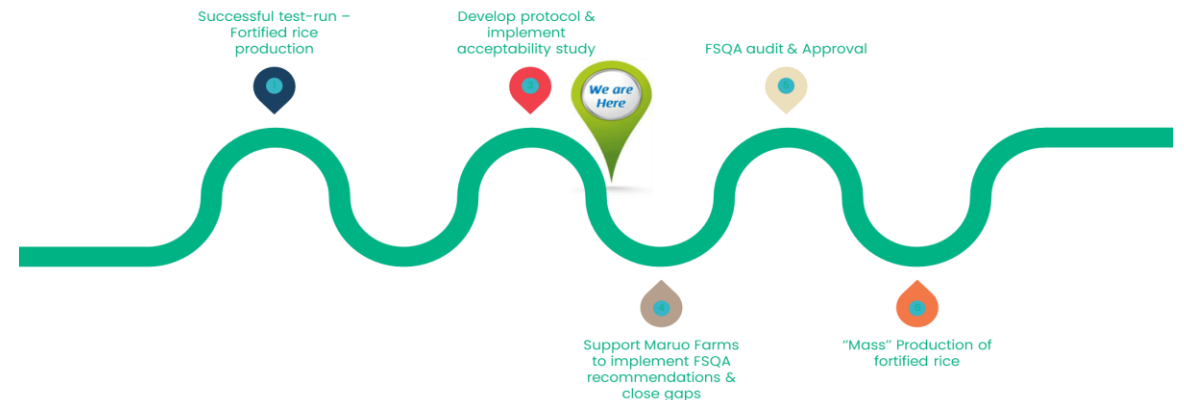
- Regulatory mechanisms
- Production of fortified kernels
- Consumer awareness / SBCC

## Market penetration

- Demand generation
- Standards / mandate
- Tax incentives
- School Health & nutrition**

Capacity building of private rice millers (equipment and food quality and safety based on WFP specifications)

- Nigeria – WACOT and others
- Senegal – SFA (Société des Filières Alimentaires)
- The Gambia – Maruo Farms
- Halos Countries



# CRIALCES Addressing immediate food and nutrition insecurity while transforming food systems to build resilience against future shocks – Burkina Faso, Mali & Niger



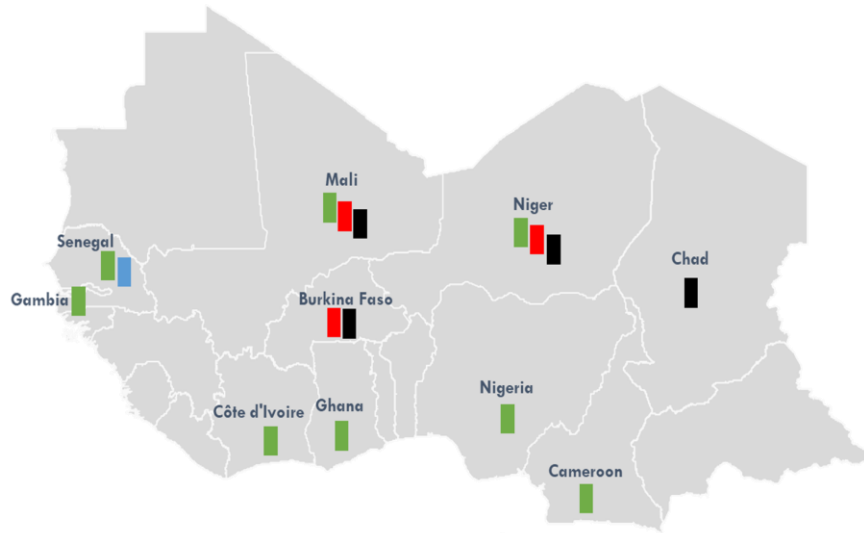
✓ **National level Industrial processors selection** on going in 3 countries, capacity strengthening of **MISOLA** units on going (equipment)

✓ **Partnership with regulatory institutions** – to ensure compliance to food safety and quality in WFP CBT Supply Chain (Processors-Retailers)



# WFP value proposition

# WFP's Value proposition



- Fortified rice/Staple food fortification
- Complementary food industrial
- Complementary food semi-industrial
- LNS/RUSF



## Partnerships, technical expertise and credibility :

2 different **processing model**: industrial & Semi-industrial

2 different types of **fortified foods**: staple food (Rice, sorghum, millet etc) & Complementary foods

- Technical complementarity with other specialised partners (GRET, GAIN)
- Capacity strengthening food production, food processing, FSQA and regulatory environment
  - Farmers organisations, women's groups (SAMS)
  - Private sector/industry
  - Regional & nat. specialised institutions: SOAC, reference laboratories, ABNORM, etc.

## Food systems approach

- Expertise & experience - Comprehensive approach – linking opportunities - production/supply (e.g. SAMS & private sector) with consumption/demand (e.g. school meals, social protection, emergency response/humanitarian)
- Strategic and operational partnerships
- Capacity to mobilise additional expertise
- Reinforce complementarity between actors
- Reinforce existing funding models with different narrative

**Nutrition, Fortification, Local Economic development & Governance**

# ADVANCING LOCAL FOOD SOLUTIONS FOR NUTRITION

## Pamphlet: Strengthening Local Food Solutions for Nutrition in RBD

### Diverse Local Food Solutions for Nutrition

Key case studies:

1. Industrial Conventional Procurement Model;
2. Commercial Affluent Consumer Semi-Industrial Model;
3. Semi-Artisanal Medium Scale Institutional and Commercial Models;
4. Large-Scale Staple Food Fortification Model;
5. SME Fortification for Large Public Consumption;
6. Community-Based Food Solutions.



Pamphlet





# Thank You